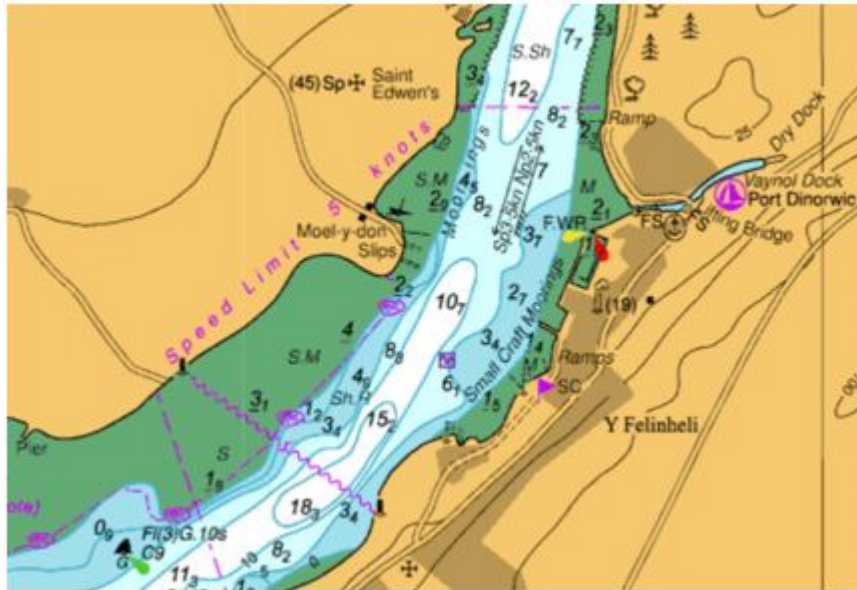


Speed Limits and Restricted areas in the Menai Straits

Cox'ns are reminded that there are areas in the Menai Straits where speed limits apply. These speed limits are mandatory and need to be observed. They occur in the areas approaching Caernarfon Harbour and Port Dinorwic. Please see attached Charts...

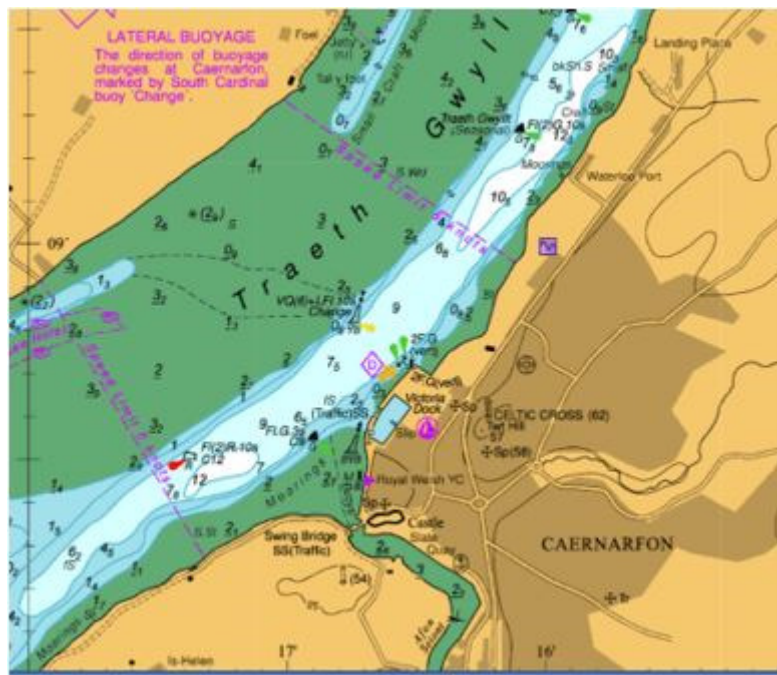
Port Dinorwic & Y Felinheli (Dinas Boatyard) Speed Limit



Watch out for these buoys



Caernarfon Harbour Speed Limit



Beaumaris Area

The area inshore from Gallows Point to the SW of Beaumaris to the B5 Buoy off Beaumaris also has a speed restriction of 8 kts, so approach Beaumaris slowly and do not moor up to the Pier. Boats should be moored up with the appropriate anchor / shot weight and monitored so that the craft does not dry out.

Plas Menai National Outdoor Centre – Restricted Area

Keep an eye out for other craft in the area, particularly sailing craft, windsurfers, jet skis and canoeists. If spotted reduce speed gradually and stay clear. When passing towards Caernarfon stay to the centre / right of the channel and when passing from Caernarfon to Dinas Boatyard stay to the centre / left of the channel.

